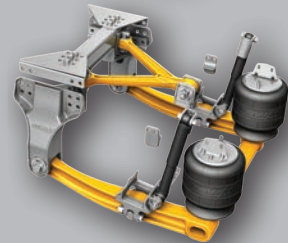
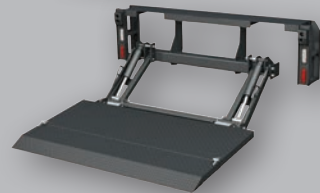
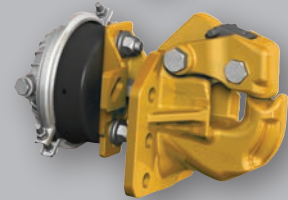


SERVICE LABOR SCHEDULE

- FIFTH WHEELS
- COUPLINGS
- LANDING GEAR
- LIFTGATES
- SUSPENSIONS



The following labor hour estimates have been determined to apply for the removal and reinstallation of SAF-HOLLAND parts. Please contact SAF-HOLLAND prior to commencing any work covered by a SAF-HOLLAND warranty.

FIFTH WHEEL PRODUCTS	DESCRIPTION	LABOR HOURS
Air Cylinder – Replacement	ILS	1.00
	XA-7003, XA-8003 & XA7301 Brackets	0.50
	XA-7001, XA-7002, XA-8001, XA-8002, XA-7009 Brackets	1.00
	Elevating Fifth Wheel Top Plates	0.50
	<i>Note: Unnecessary to remove fifth wheel</i>	
Top Plate – Replacement	XA-351, XA-331, XA-311, XA-201, XA-71, XA-17, XA-AL, XA-S1, XA-S2, Simplex SE & SEII <i>Note: Outside Pin Retension</i>	0.50
	XA-3501, XA-2009 and old style XA-71 <i>Note: Inside Pin Retention</i>	1.00
Brackets – Replacement	ILS (each side)	0.50
	<i>Note: Sliding – New Style</i>	
	XA-7001, XA-8001, XA-7009 Series Brackets <i>Note: Sliding – Old Style</i>	2.50
	XA-7511, XA-7611, XA-7811, XA-7521, XA-7621, XA-7821 Series Brackets <i>Note: Angle Mount (stationary)</i>	4.50
	XA-7501, XA-7601, XA-7801 Series Brackets <i>Note: XA-0686 Plate Mount (stationary)</i>	2.50
	XA-7883 Series Brackets <i>Note: Plate Mount (stationary)</i>	2.00
	FW0100, FW0165	2.00
	FW2080	2.00
	<i>Note: Includes removal and remounting of top plate</i>	
Slider Plates – Replacement	Outboard Mount	3.00
	Inboard for Angle Mount with Angles	4.00
	Onboard for Angle Mount without Angles	5.00
	Any Slide Base Over 48" add	1.00
	<i>Note: Includes removal and remounting of top plate</i>	
Top Plate – Rebuild	XA-171, XA-S1, XA-S2	1.00
	XA-2009	2.00
	XA-351, XA-331, XA-311	2.00
	XA-3501	2.50
	HD – XA-71, XA-101, XA-0165, XA-2801	2.50
	XA-201	1.50
<i>Note: Includes removal and remounting of top plate</i>		
Pin Replacement	XA-201, XA-171, XA-S1, XA-S2	0.50
Lock Pin Replacement	XA-351	1.00
Lock Replacement	XA-201, XA-171, XA-S1, XA-S2	0.50
	XA-351	1.00
	XA-3501	1.50
	HD – XA-71, XA-101, XA-0165, XA-2801	1.00
	<i>Note: Includes removal and remounting of top plate</i>	
NoLube Pads	Kit Includes Two Pads – LH & RH	1.00
Elevating Fifth Wheels	Hydraulic Cylinder Replacement (FW2800, FW2900)	4.00
ELI (Electronic Lock Indicator)	Replace Sensor	0.50
	Replace Chassis Cable	0.50
	Replace Logic Box	0.50

FIFTH WHEEL PRODUCTS	DESCRIPTION	LABOR HOURS
ELI-te	Replace FW to Vehicle Cable EE-12015-(various)	0.20
	Replace FW Harness EE-11971	0.50
	Replace Kingpin Flag Assembly XA-11984	0.20
	Replace Lamp Brackets – Each	0.50
Other	Items not listed will be reviewed on an individual basis and the appropriate allowance will be negotiated. SAF-HOLLAND USA reserves the right, without giving prior notice, to change the labor allowance as designs are altered or improved.	<i>continued</i>

Coupler Products Service Labor Schedule

COUPLING PRODUCTS	DESCRIPTION	LABOR HOURS
Replacement – Bolt On	Pintle Hooks, Couplers or Drawbars	0.50
Replacement – Weld-On	Pintle Hooks, Couplers or Drawbars	1.00
Replacement – Bolt-On	Kingpin	1.00
Replacement – Weld-On	Kingpin	(Non Reefer) 4.00
		(Reefer) 8.00
Other	Items not listed will be reviewed on an individual basis and the appropriate allowance will be negotiated. SAF-HOLLAND USA reserves the right, without giving prior notice, to change the labor allowance as designs are altered or improved.	

Landing Gear Products Service Labor Schedule

LANDING GEAR PRODUCTS	DESCRIPTION	LABOR HOURS
Replacement	Replace Set	4.00
	Replace Two-Speed (gear box) Leg	2.00
	Replace Single Speed Leg	2.00
Repair	Two-Speed Leg – Complete disassembly	2.00
	Single-Speed Leg – Complete disassembly	1.75
	Two-Speed Leg – Replace bevel gear and pinion	1.50
	Single-Speed Leg – Replace bevel gear and pinion	1.00
	<i>Note: Includes removal and remounting of landing gear leg</i>	
	Gear Box – Complete disassembly	1.00
	Replace Broken Pin in Gear Box	1.00
Replace Crank Handle	0.50	
Replace Cross Drive Shaft	0.50	
<i>Note: Landing gear leg removal not required</i>		
Other	Items not listed will be reviewed on an individual basis and the appropriate allowance will be negotiated. SAF-HOLLAND USA reserves the right, without giving prior notice, to change the labor allowance as designs are altered or improved.	

LIFTGATE PRODUCTS	DESCRIPTION	LABOR HOURS
Cylinder	Fold-Away Liftgates – TG Series and TL Series	0.75
Cylinder	DH Series	1.25
Cylinder – Fold/Unfold	DH Series	0.75
Platform	All Liftgates – DH Series, TG Series and TL Series	1.00
Platform – Inner	DH Series	1.25
Platform – Outer	DH Series	1.00
Chain Stanchion	DH Series	0.25
Lift Frame	Fold-Away Liftgates – TG Series and TL Series	1.50
Parallel Arm	Fold-Away Liftgates – TG Series and TL Series	0.75
Pins – Shackle or Platform	All Liftgates – DH Series, TG Series and TL Series	0.25
Ramp/Flip-Over	All Liftgates – DH Series, TG Series and TL Series	0.25
Shackle	Fold-Away Liftgates – TG Series and TL Series	0.50
Torsion Spring	Fold-Away Liftgates – TG Series and TL Series	0.50
Pump	Fold-Away Liftgates – TG Series and TL Series	1.00
Pump	DH Series	1.25
Pump Motor	All Liftgates – DH Series, TG Series and TL Series	1.00
Hydraulic Hose	All Liftgates – DH Series, TG Series and TL Series	0.50
Hydraulic Hose Bundle – Column	TG Series	1.00
Solenoid	All Liftgates – DH Series, TG Series and TL Series	0.25
Valve Cartridge	All Liftgates – DH Series, TG Series and TL Series	0.25
Valve Coil	All Liftgates – DH Series, TG Series and TL Series	0.25
Wiring Harness	DH Series	0.50
Switch – Column	DH Series	0.25
Switch – Control Station	DH Series	0.25
Switch – Potted Toggle	Fold-Away Liftgates – TG Series and TL Series	0.50
Troubleshooting Electrical	Fold-Away Liftgates – TG Series and TL Series	0.25
Troubleshooting Electrical	DH Series	0.75
Troubleshooting Hydraulics	Fold-Away Liftgates – TG Series and TL Series	0.25
Troubleshooting Hydraulics	DH Series	0.75
Other	Items not listed will be reviewed on an individual basis and the appropriate allowance will be negotiated. SAF-HOLLAND USA reserves the right, without giving prior notice, to change the labor allowance as designs are altered or improved.	

SUSPENSION PRODUCTS	DESCRIPTION	LABOR HOURS
U-Bolts	1" Diameter and Under	0.50
	Over 1" Diameter	1.00
Axle Adapters	Axle Adapter, Air-Ride	4.00
	2 Piece Axle Adapter, RL	5.00
	Axle Beam Seat	2.00
	<i>Note: Additional time when replacing two adapters or seats</i>	
Bars and Rods	Torsion Bar, Air-Ride	1.50
	Radius Rod	1.50
	Tack Bar/Torque Rod (Each)	1.50
	<i>Note: All four (4)</i>	
Beams	Equalizing Beam, Air-Ride – RL, RLU, NS	4.00
	Equalizing Beam – TR, RTS	3.00
	Walking Beam – WB, (65,000 lb. Capacity)	3.50
	Walking Beam – WB (150,000 lb. Capacity)	6.00
	Transverse Beam – ARD and AD	1.50
	Lift Beam – AL	2.00
Brackets	Air Ride Frame Bracket – Welded	5.00
	Air Ride Frame Bracket – Bolt-On	3.00
	UltraLite Frame Bracket	4.00
	Shock Bracket, Upper	1.50
	Shock Bracket, Lower	2.00
Caps	Axle Cap	1.00
	Trunnion Cap	1.00
Rubber Components	Axle Connection Bushing (AD/ARD/ADL)	3.00
	Shock Absorber Bushing (per shock)	0.50
	Pivot Bushing (per bushing)	2.00
	Rubber Pad	1.50
	Rubber Wrapper	1.50
	Transverse Beam Bushing	1.00
	ADL Transverse Beam Bushing	3.00
	Trunnion Bushing, Track Bar and Torque Rod	2.00
Springs	Air Spring	1.00
	Air Cell	1.50
	Air Spring Piston	0.50
	Leaf Spring, TS and UltraLite	3.50
	Leaf Spring, RTS/TL	2.00
Tubes	Trunnion Tube	4.00
Air Controls	Height Control Valve	1.00
	Fixed Linkage	0.50
	Adjustable Linkage - 2 piece	0.50
	Flexible Linkage	1.00
Miscellaneous Parts	Alignment Bushings	1.00
	Cam Assembly (Coil Spring Lift)	1.50
	Coil Spring (Coil Spring Lift)	3.00
	Drop Center Axle (casting only)	8.00
	Shock Absorber	0.50

SUSPENSION PRODUCTS	DESCRIPTION	LABOR HOURS
Trailer Slide Box	Mechanical Slider	10.00
	Mechanical Slider w/Ramp Slide	12.00
	Air-Ride Slider	14.00
	Slide Pads	2.00
	Replace Pins	1.00
	Pin Puller Replacement	2.50
	Cracked G Rail – 2 Corners	1.00
	Cracked G Rail – 4 Corners	2.00
Trailer Axle Repairs	Disc – ABS Sensor (each)	0.25
	Disc – Caliper (each)	0.75
	Disc – Chamber (each)	0.50
	Disc – Hub (each)	1.50
	Disc – Pads (per axle)	1.00
	Disc – Rotor (each)	1.50
	Drum – Bracket Repair – Chamber or S Cam	2.00
	Drum – Cam Enclosure (each)	0.75
	Drum – ABS Sensor (each)	1.50
	Drum – Chamber (each)	0.50
	Drum – Hub (each)	1.50
	Drum – Shoes (per axle)	1.50
	Trailer Axle Replacement	Dressed (Complete Wheel Ends) - Drum Brake, C88, P89 (New), P89 Integral, P89 Plus
Beam and Brake (Drum Brake Only)*		6.00
Bare (Beam and Axle Assembly Only)		
Drum Brake* **		8.00
C88*		7.00
P89 New* **		8.00
P89 Integral* **		8.00
P89 Plus* **		7.00
CBL (Center Bag Lift)	Air Spring	1.00
	Beam Assembly	2.00
	Cable	0.50
PosiLok/EDL	Actuator Service Chamber	0.50
	Flipper Plate	1.00
	Support Bracket	0.50

* The Above based on oil filled hubs where applicable, if system calls for semi-fluid grease add .5 hours per axle.

** Above does not include a tire inflation system. If axle is prepared then no additional allowance, if conversion is required add 1 hour

continued

SUSPENSION PRODUCTS	DESCRIPTION	LABOR HOURS
IFS (Independent Front Steer)	Hub and Drum, Wheel Bearing or Seal	1.50
	Slack Adjuster (replace)	0.50
	Knuckle Post Bearing Replacement	2.00
	Knuckle Post Replacement	4.00
	Upper Control Arm Wear Washers	1.00
	Upper Control Arm Replacement	1.50
	Lower Control Arm Replacement	1.00
	Tie Rod (Drag Link) Replacement	1.50
	Pitman Arm Replacement	2.00
	Steering Gear Replacement (chassis only)	1.00
	Steering Gear Replacement (with body)	3.00
	Brake Shoe Replacement	1.00
	Sub-frame Replacement	16.00
	Sway Bar	1.00
	ADZ	V-Rod
Crossmember		4.00
V-Rod Bushings (3 per V-Rod – allowance is for all 3 bushings)		3.50
Lower Control Arm (LCA)		4.00
ADTB	H Frame Replacement	24.00
LSZ	Spindle	2.50
	Kingpin	2.50
	Tie Rod End	0.50
	Tie Rod	1.00
	Steering Damper	0.50
	Super Chamber	0.50
	Super Chambr Bracket	0.50
	Control Arm (with bushings) – Upper Control Arm	1.00
	Control Arm (with bushings) – Lower Control Arm	0.50
	Control Arm Bushing (includes both bushings) – Upper Control Arm	2.00
	Control Arm Bushing (includes both bushings) – Lower Control Arm	1.00
	Frame Bracket	3.00
	Crossmember	1.00

Other

Items not listed will be reviewed on an individual basis and the appropriate allowance will be negotiated. SAF-HOLLAND USA reserves the right, without giving prior notice, to change the labor allowance as designs are altered or improved.

continued



Engineering Your Road to Success

SAF-HOLLAND is a leading supplier of highly efficient components, systems and service programs in the global commercial vehicle industry. Our three core product brands are recognized for delivering innovative solutions that optimize fleet operations in every corner of the world.



**TRAILER AXLES AND
SUSPENSION SYSTEMS**



**COUPLING AND LIFTING
TECHNOLOGIES**



**SUSPENSIONS FOR
TRUCKS AND BUSES**

With our team of over 3,000 employees and a worldwide network of over 9,000 service partners, we serve our fleet customers with know-how and passion, and always focused on one target: **Engineering your road to success.** Anywhere in the world. Under any conditions. 365 days a year.

HIGHLY EFFICIENT COMPONENTS AND SYSTEMS FOR TRUCKS AND TRAILERS



EUROPE | AMERICAS | AFRICA | ASIA | MIDDLE EAST | AUSTRALIA

safholland.com

SAF-HOLLAND, Inc.
888.396.6501 Fax 800.356.3929

SAF-HOLLAND Canada Limited
519.537.3494 Fax 800.565.7753
Western Canada 604.574.7491 Fax 604.574.0244