

# Marketing Bulletin

## Holland Fifth Wheels

### Stationary Mounting Bracket Change

Mounting brackets changing from fabricated style to cast style.

JUNE 2010

On November 12th, 2009, all Holland Fifth Wheel Stationary Mounting Brackets, except for the heavy duty and plate mount "dog bone" style, were changed from fabricated to a cast style (**Figure 1**).

**IMPORTANT:** Stationary mounting brackets must be replaced in pairs. Never mix a new cast style bracket with an older fabricated style bracket. Combining a cast style bracket with an older fabricated style bracket may cause damage to the fifth wheel top plate and/or mounting system.

**WARNING**

Failure to replace stationary mounting brackets in pairs could cause component damage to the top plate and/or mounting system which, if not avoided, may result in death or serious injury.

The plate mount "dog bone" style stationary mounting brackets will remain in the fabricated style and will continue to be sold under their same part number until further notice.

New cast style stationary mounting brackets will be used on all current over the highway fifth wheel models (FW35, FW33, FW31, FWAL, FW17, FWS1 and FWS2).

Figure 1

Old Fabricated Style Stationary Mounting Bracket



New Cast Style Stationary Mounting Bracket Kit



INTEGRAL TILT STOP INCLUDED IN CASTING

**OLD FABRICATED STYLE**

**IMPORTANT:** Stationary brackets must be replaced in pairs. Replacement Kits have been created to include both LH & RH new cast style brackets.

**NEW CAST STYLE**

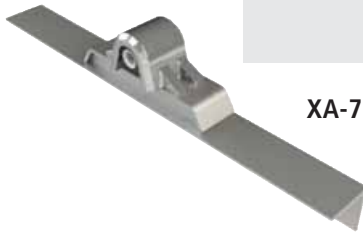
|             |   |                 |                |                                      |   |
|-------------|---|-----------------|----------------|--------------------------------------|---|
| FOOT MOUNT  |    | <b>XA-7801</b>  | REPLACE WITH → | <b>RK-Y900</b><br>RH & LH Brackets   |    |
|             |    | <b>XA-7802</b>  | REPLACE WITH → | <b>RK-Y800</b><br>RH & LH Brackets   |    |
|             |   | <b>XA-7803</b>  | REPLACE WITH → | <b>RK-Y700</b><br>RH & LH Brackets   |   |
|             |  | <b>XA-7804</b>  | REPLACE WITH → | <b>RK-Y600</b><br>RH & LH Brackets   |  |
| ANGLE MOUNT |  | <b>XA-7811G</b> | REPLACE WITH → | <b>RK-W900-G</b><br>RH & LH Brackets |  |
|             |  | <b>XA-7812G</b> | REPLACE WITH → | <b>RK-W800-G</b><br>RH & LH Brackets |  |

**OLD FABRICATED STYLE**

**IMPORTANT:** Stationary brackets must be replaced in pairs. Replacement Kits have been created to include both LH & RH new cast style brackets.

**NEW CAST STYLE**

ANGLE MOUNT



XA-7813G

REPLACE WITH →



RK-W700-G  
RH & LH Brackets



XA-7814G

REPLACE WITH →



RK-W600-G  
RH & LH Brackets

BRACKET ONLY



XA-7821

REPLACE WITH →



RK-X900  
RH & LH Brackets



XA-7822

REPLACE WITH →



RK-X800  
RH & LH Brackets



XA-7823

REPLACE WITH →



RK-X700  
RH & LH Brackets



XA-7824

REPLACE WITH →



RK-X600  
RH & LH Brackets



From fifth wheel rebuild kits to suspension bushing repair kits, SAF-HOLLAND Original Parts are the same quality components used in the original component assembly. SAF-HOLLAND Original Parts are tested and designed to provide maximum performance and durability. Will-fits, look-alikes or, worse yet, counterfeit parts will only limit the performance potential and could possibly void SAF-HOLLAND's warranty.

Always be sure to spec SAF-HOLLAND Original Parts when servicing your SAF-HOLLAND product.

XL-AM10014MB-en-US Rev A · 2010-06-14 · Amendments and Errors Reserved © SAF-HOLLAND, Inc.

## HIGH QUALITY COMPONENTS FOR THE COMMERCIAL VEHICLE INDUSTRY



EUROPE · NORTH AMERICA · SOUTH AMERICA · AFRICA · ASIA · AUSTRALIA

SAF-HOLLAND USA, Inc.  
888.396.6501 Fax 800.356.3929

SAF-HOLLAND Canada Limited  
519.537.3494 Fax 800.565.7753  
Western Canada 604.574.7491 Fax 604.574.0244

[www.safholland.com](http://www.safholland.com)

